

# Supraclavicular Block Quick Guide

---

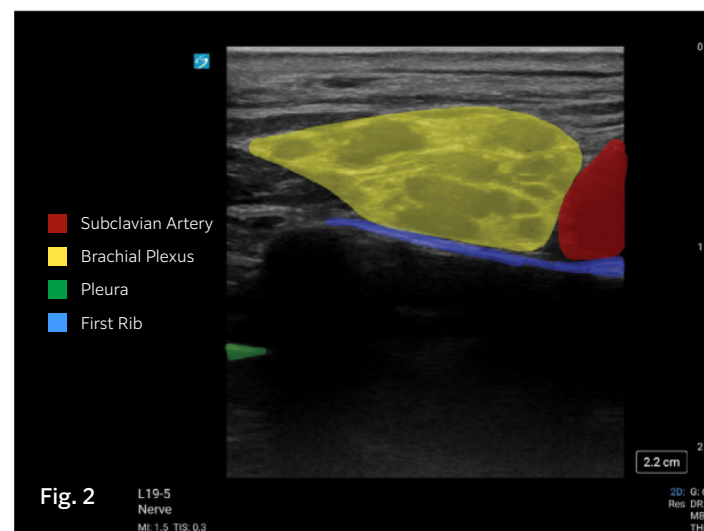
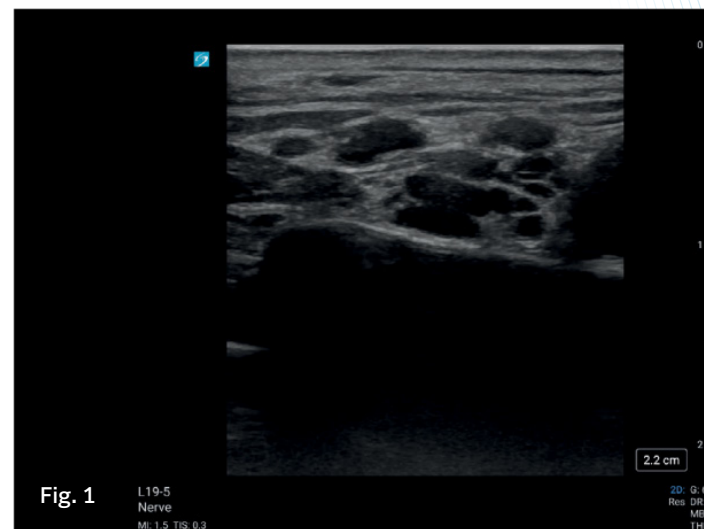
**Any patient. Anywhere. Anytime.**

This Quick Guide is intended for healthcare professionals and not for patients or consumers. The information in this Quick Guide is provided for general educational purposes, as a convenient quick reference and a supplement to professional experience, education and training, and should not be considered the exclusive source for this type of information. This Quick Guide does not replace or supersede device labeling, including instructions for use, which accompanies any FUJIFILM Sonosite product. At all times, it is the professional responsibility of the practitioner to exercise independent clinical judgment in each particular situation. FUJIFILM Sonosite assumes no responsibility or liability for any misuse of this Quick Guide.



# SUPRACLAVICULAR BRACHIAL PLEXUS BLOCK

The supraclavicular brachial plexus block provides anesthesia and analgesia to the upper extremity, distal to the shoulder.



**Any patient. Anywhere. Anytime.**

This Quick Guide is intended for healthcare professionals and not for patients or consumers. The information in this Quick Guide is provided for general educational purposes, as a convenient quick reference and a supplement to professional experience, education and training, and should not be considered the exclusive source for this type of information. This Quick Guide does not replace or supersede device labeling, including instructions for use, which accompanies any FUJIFILM Sonosite product. At all times, it is the professional responsibility of the practitioner to exercise independent clinical judgment in each particular situation. FUJIFILM Sonosite assumes no responsibility or liability for any misuse of this Quick Guide. SONOSITE and the SONOSITE logo are trademarks and registered trademarks of FUJIFILM Sonosite, Inc. in various jurisdictions. FUJIFILM is a trademark and registered trademark of FUJIFILM Corporation in various jurisdictions. All other trademarks are the property of their respective owners.

## Supraclavicular brachial plexus block

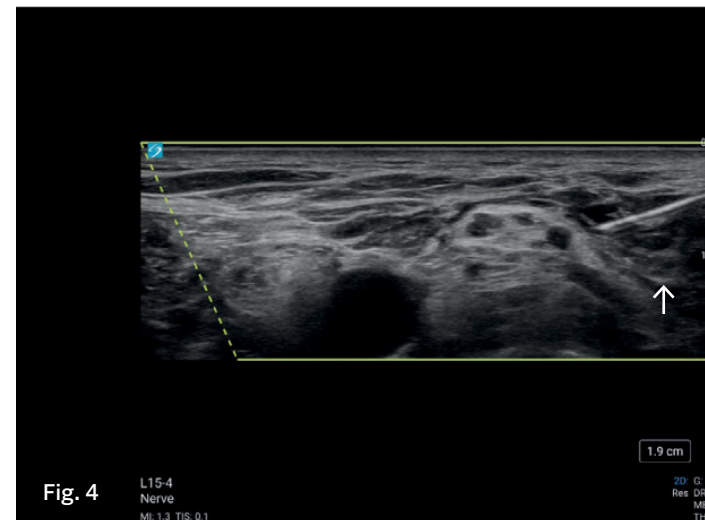
The supraclavicular brachial plexus block is used to provide anesthesia and analgesia for surgeries of the upper extremity, distal to the shoulder.

### Objective:

Spread of local anesthetic surrounding the brachial plexus lateral to the subclavian artery and superior to the 1st rib.

### Clinical Pearls:

- Use a high frequency linear transducer on a nerve exam type
- Position the patient supine with the head turned to the contralateral side
- Approximate depth 2-3 cm
- The transducer is placed transversely, mid-clavicle within the supraclavicular fossa
- The brachial plexus is located lateral to the subclavian artery and superior to the first rib. It is often seen in the 1-3 o'clock position adjacent to the subclavian artery
- Ideal ultrasound image of the supraclavicular brachial plexus should include: First rib, subclavian artery, and pleura. A clear delineation between the artery and brachial plexus should be visualized
- In-plane needle insertion with a lateral to medial approach
- Color Doppler can be utilized to confirm subclavian artery position along with identification of any vessel anatomical variations



**Any patient. Anywhere. Anytime.**

This Quick Guide is intended for healthcare professionals and not for patients or consumers. The information in this Quick Guide is provided for general educational purposes, as a convenient quick reference and a supplement to professional experience, education and training, and should not be considered the exclusive source for this type of information. This Quick Guide does not replace or supersede device labeling, including instructions for use, which accompanies any FUJIFILM Sonosite product. At all times, it is the professional responsibility of the practitioner to exercise independent clinical judgment in each particular situation. FUJIFILM Sonosite assumes no responsibility or liability for any misuse of this Quick Guide. SONOSITE and the SONOSITE logo are trademarks and registered trademarks of FUJIFILM Sonosite, Inc. in various jurisdictions. FUJIFILM is a trademark and registered trademark of FUJIFILM Corporation in various jurisdictions. All other trademarks are the property of their respective owners.

**Any patient. Anywhere. Anytime.**

**FUJIFILM Sonosite, Inc.**

Worldwide Headquarters

21919 30th Drive SE, Bothell, WA 98021-3904

Tel: +1 (425) 951 1200 or +1 (877) 657 8050

Fax: +1 (425) 951 6800

**sonosite.com**

This Quick Guide is intended for healthcare professionals and not for patients or consumers. The information in this Quick Guide is provided for general educational purposes, as a convenient quick reference and a supplement to professional experience, education and training, and should not be considered the exclusive source for this type of information. This Quick Guide does not replace or supersede device labeling, including instructions for use, which accompanies any FUJIFILM Sonosite product. At all times, it is the professional responsibility of the practitioner to exercise independent clinical judgment in each particular situation.

FUJIFILM Sonosite assumes no responsibility or liability for any misuse of this Quick Guide. SONOSITE and the SONOSITE logo are trademarks and registered trademarks of FUJIFILM Sonosite, Inc. in various jurisdictions. FUJIFILM is a trademark and registered trademark of FUJIFILM Corporation in various jurisdictions. All other trademarks are the property of their respective owners.

Copyright © 2025 FUJIFILM Sonosite, Inc. All rights reserved. Subject to change.

EDU20831 Rev B 01/25