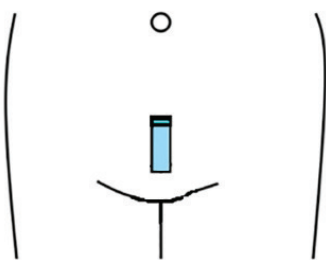


## How to Perform a Bladder Volume Calculation

- Enter Patient details, if required
- Select a curved or phased array transducer with the **Abdomen** preset
- Obtain a sagittal/longitudinal image by placing the transducer on the patient at the level of the symphysis pubis. The orientation marker on the transducer should be pointed towards the patient's head (Fig. 1a).

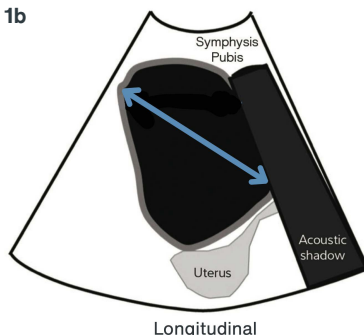
**Fig. 1a**




View 1 - Longitudinal

- Tap **FREEZE** ❄️
- Tap **CALCS**
  - Tap **Bladder**
  - Tap **Bladder L (Length)**
  - Position the yellow active caliper at the superior edge of the bladder (Fig. 1b, c)

**Fig. 1b**



Longitudinal

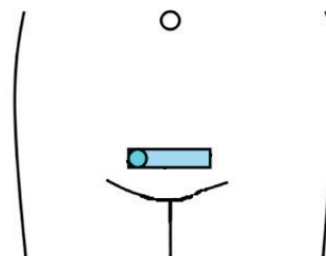
- Tap **Select** to activate the other end of the caliper, and position it at the inferior edge of the bladder, maximizing caliper length (Fig. 1b, c)
- Tap  to **Save Image** and **CALC**
- Unfreeze

**Fig. 1c**



- Obtain a transverse view with the orientation marker toward the patient's right, while angling slightly inferior (Fig. 2a)
- Tap **FREEZE** ❄️ to freeze the image

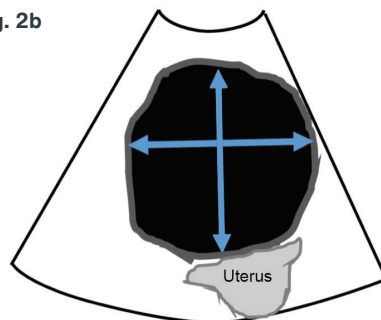
**Fig. 2a**



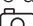
View 1 - Transverse

- Tap **CALCS**
  - Tap **Bladder**
  - Measure the transverse bladder **Width** by selecting **Bladder W** and placing the calipers from side to side (Fig. 2b, c)
  - Measure the bladder **Height** by

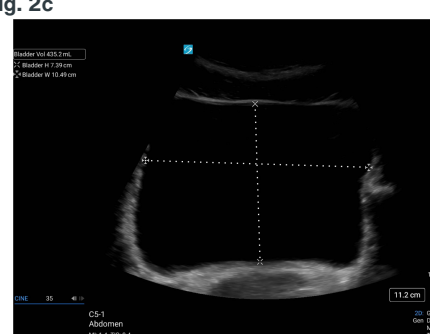
**Fig. 2b**



Transverse

- selecting **Bladder H** and placing the calipers from anterior to posterior (Fig. 2b, c)
- The volume will appear on the image in the upper left corner of the screen
- Tap  to **Save Image** and **CALC**

**Fig. 2c**



\* Remember Volume is (Length x Width x Height X .523). It does not matter which is your first measurement as long as you get all 3 measurements and SAVE them to the CALCS package.

Dicuio et al. Measurements of urinary bladder volume: comparison of five ultrasound calculation methods in volunteers. Arch Ital Urol Androl. 2005 Mar;77(1):60-2. PMID: 15906795.

### FUJIFILM Sonosite, Inc.

Worldwide Headquarters  
21919 30th Drive SE, Bothell, WA 98021-3904  
Tel: +1 (425) 951 1200 or +1 (877) 657 8050  
Fax: +1 (425) 951 6800 [sonosite.com](http://sonosite.com)

This Quick Guide is intended for healthcare professionals and not for patients or consumers. The information in this Quick Guide is provided for general educational purposes, as a convenient quick reference and a supplement to professional experience, education and training, and should not be considered the exclusive source for this type of information. This Quick Guide does not replace or supersede device labeling, including instructions for use, which accompanies any FUJIFILM Sonosite product. At all times, it is the professional responsibility of the practitioner to exercise independent clinical judgment in each particular situation. FUJIFILM Sonosite assumes no responsibility or liability for any misuse of this Quick Guide.

SONOSITE and the SONOSITE logo are registered and unregistered trademarks of FUJIFILM Sonosite, Inc. in various jurisdictions. FUJIFILM is a registered trademark of FUJIFILM Corporation in various jurisdictions. All other trademarks are the property of their respective owners.

Copyright © 2025 FUJIFILM Sonosite, Inc. All rights reserved. Subject to change.

EDU20941\_Rev B 07/2025